

TECHNOLOGY MEETS EFFICIENCY

Mahindra Powerol Diesel Gensets

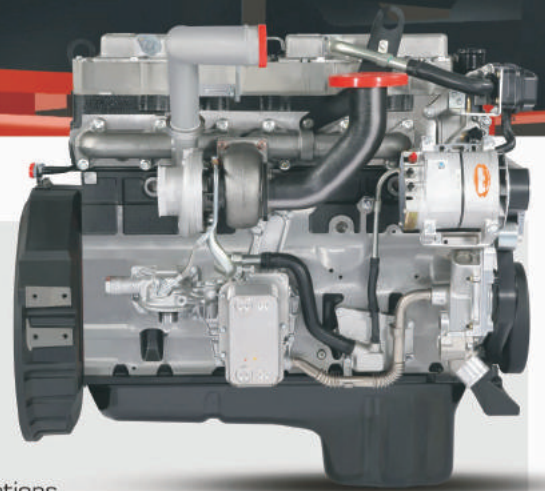
Presenting
**250 kVA &
320 kVA**



Actual product colour may vary

250 kVA & 320 kVA Gensets

Features and Benefits



Advanced Engine

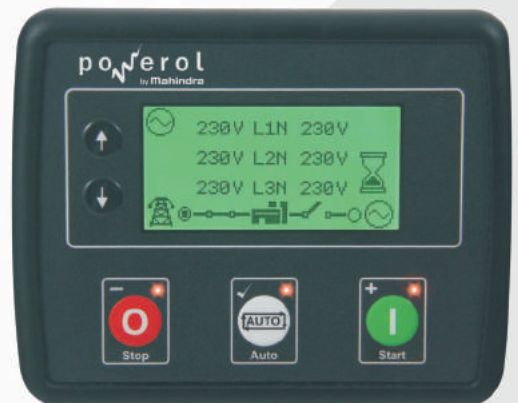
- CRDe technology for better fuel efficiency and emission
- Fully electronic engine, has excellent transient response capability.
- These electronic engines have better diagnostics and troubleshooting capability.
- Highest block loading capacity which makes it ideal for heavy duty applications
- Multi-stage air filter helps in smooth functioning even in dusty conditions

Genset Controller

Premium controller that delivers accurate metering, best in class protection for optimum genset performance. With Genset controller, the genset is always protected against breakdowns from electrical or mechanical flaws and thereby ensures maximum uptime.

Key features

- Compatible with Auto Mains Failure facility
- 500 event log memory storage
- Comes with RS 485 port for modbus communication as standard scope
- Activation time delay for oil pressure, coolant temperature, voltage and frequency faults
- Routine maintenance & service alerts
- 5 configurable inputs
- Sleep mode
- Remote start & stop facility



Genset Monitoring (Key Parameters)

- Generator/load power [kW, kVA, kVA_r, pf], generator/load current, battery voltage.
- RPM, running hours, oil pressure, engine temperature and fuel level

Genset Protection (Key Parameters)

- High engine temperature, low oil pressure, engine over/under speed,
- Over current, over/under voltage, Charging alternator low voltage

Smart DG **DiGi SENSE** by Mahindra

Mahindra's DiGi-SENSE technology makes possible monitoring of all the critical performance parameters anytime from anywhere. It is an end to end ecosystem that connects product and customers over a cloud platform. This helps in better diagnostics of the genset for proactive maintenance and thereby improving uptime of the genset.

Important features:

- Live information of critical genset performance parameters through Dashboard
- Real-time alerts and notifications
- Scheduled maintenance reminders over SMS and E mail
- Analytical reports for performance check

Live Information

412.0 V Generator Voltage	186.0 A Generator Current	50.0 Hz Generator Frequency
144.0 Total KVA	36,953.0 KWH	108.0 Total KW
84.0 Total KVA _r	27.3 V Battery Voltage	0.8 Average PF

250 kVA & 320 kVA Gensets

Alternator

- Brushless type, screen protected, revolving field, self-excited alternator conforming to IS/IEC 60034-1
- 3 Phase reconnect type winding with 12 terminals brought out for connection
- Superior winding for harmonic reduction
- Epoxy coating for consistent performance in all weather conditions.
- Better transient response capability



Acoustic Enclosure

- Unique trapezoidal design, makes it aesthetically appealing
- Designed to operate in extreme climatic conditions in temperatures ranging from -10 °C. to 55 °C. without any external aid.
- Superlative fade resistant paint can last longer in tough weather conditions.
- Draw out type fuel tank for easy maintenance
- Fire retardant acoustic and insulation material for better safety.



Optional Accessories

PMG alternator, Space Heater, RTD/BTD, Coolant / Oil heater, Synchronization. For more details kindly contact our authorised representative

Unique Service Offering: Powerol Super Shield Plan*

With SUPER SHIELD plan, Powerol takes its reliability even further. Super Shield is a 5-year all-inclusive coverage plan. Which means, zero repair charges, zero service charges and zero spare replacement costs, for five whole years.

*offered in India presently

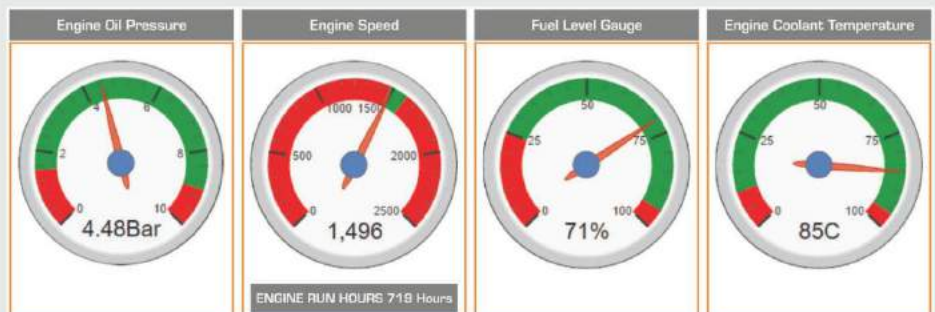


Sales & Service Network

- Wide and efficient network to serve you faster and better.
- Over 400 sales and service touch points across India

Support is just a call away

Our customer care centre is equipped with the latest software for monitoring & time bound escalation till closure of the complaints. To make it simpler for our customers, a common Toll free number is available for both sales and service support.



250 kVA & 320 kVA Gensets



Technical Specifications:

Genset Prime Rating (kVA)	250	320
Genset Prime Rating (kW)	200	256
Phase / Voltage (V)	3 Φ / 415	
Power Factor	0.8 (lagging)	
Current (A)	348	445
Frequency (Hz)& RPM	50 / 1500	
Governing class	G2 as per ISO 8528 part V	
Genset Starting System (V. DC)	24	
Fuel Tank Capacity (lit)	575	
Genset Dimensions [L x W x H in mm] approx	4600 x 1700 x 2025	4800 x 1700 x 2025
Dry Genset Weight	3700	3950
Engine Specification		
Make	Mahindra mPOWER	Mahindra mPOWER
Model	mPower63105G	mPower63905G
Gross Rated Power at 100%Load HP	310	390
Aspiration	TCA	TCA
No. of cylinders	6	6
Bore x Stroke (mm)	116.6 x 146.1	116.6 x 146.1
Displacement (Lit)	9.3	9.3
Fuel consumption @ 75% load (lit/hr) ^	41.2	51.5
Fuel consumption @ 100% load (lit/hr) ^	54.1	67.4
Lube oil specification	15W40 API Ci4+	
Lube oil refill quantity (Lit)	30	30
Lube oil consumption @ full load \$	0.1% of Fuel Consumption	
Lube oil change period (hrs.)	500	500
Radiator coolant refill quantity (Lit)	45	45
Alternator Specification		
Make	Mahindra Powerol	Mahindra Powerol
Enclosure Type	IP23	IP23
Voltage regulation	$\pm 1\%$	$\pm 1\%$
Class of insulation	Class H	Class H
Maximum Unbalanced Load across Phases	25%	25%

Notes: Above specifications are subject to change without prior notice due to continuous product improvements. All engines & alternators conform to respective IS standards. All the genset specifications conform to ISO 8528 standard, Fuel - High Speed Diesel (HSD IS 1460 : 2005)

^ Considering 0.845 specific gravity of diesel, 5% tolerance, \$ Considering 0.89 specific gravity of oil, * For Standby duty, contact Powerol authorized representative. All specifications are at standard NTP operating conditions



Mahindra & Mahindra Ltd.
Powerol Business, Powerol Building,
Gate No. 2, Akurli Road, Kandivali (E),
Mumbai - 400 101, India.

Dealer Stamp



Toll free no.
1800 419 1999



poweroldg@mahindra.com



mahindrapowerol.com